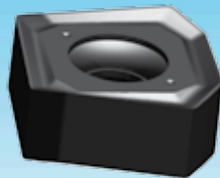
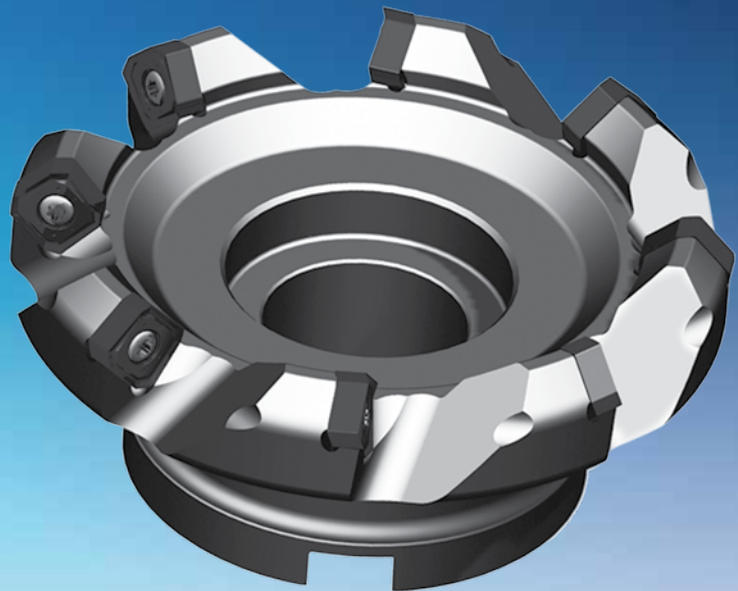


FMA11

New generation of face milling
with double side insert

Neue Planfräser mit doppelseitiger WSP



- 8 cutting edge.
- Inserts with big rake angle, reducing power consumption.
- Milling cutter with double negative angle and with thicker inserts for high stability and big cutting depth.
- Inserts with wiper cutting dege for good surface quality.

- 8 Schneidkanten für höhere Auslastung der Wendschneidplatte.
- Großer Spanwinkel für weichen Schnitt.
- Doppelseitige, extra dicke Wendschneidplatte für große Spantiefen bei hoher Bruchsicherheit.
- Wiper Geometrie für beste Oberflächengüte.



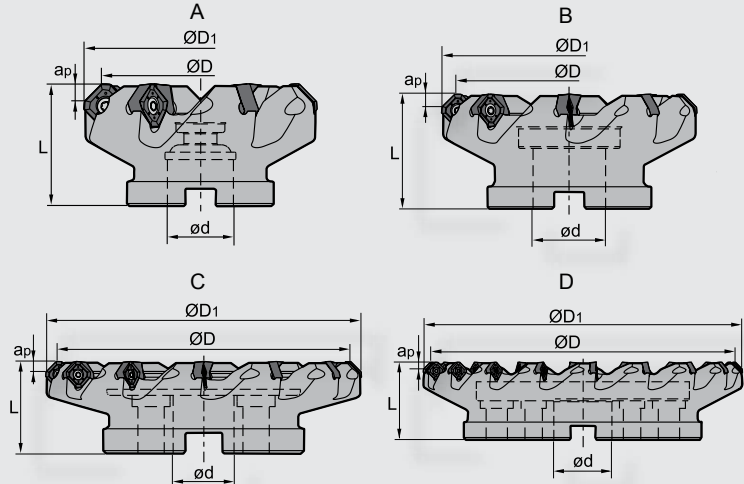
Face milling with
double side inserts.

Kr:45°



Face Milling Tools · Planfräser





FMA11 P K



Specification of tools · Werkzeug Beschreibung

Type Typ	Stock Lager	Dimension (mm) Abmessung						No. of teeth Zähne	Coupling Aufnahme	Weight Gewicht (kg)	
		R	L	ØD	ØD ₁	Ød	L				a _{pmax}
FMA11	-063-A22-SN12-05C	●		63	74.47	22	40	5.5	5	A	0.55
	-080-A27-SN12-06C	●		80	91.47	27	50	5.5	6	A	1.14
	-100-B32-SN12-07	●		100	111.47	32	50	5.5	7	B	1.42
	-100-B32-SN12-07C	○		100	111.47	32	50	5.5	7	B	1.42
	-125-B40-SN12-08	●		125	136.47	40	63	5.5	8	B	2.86
	-125-B40-SN12-08C	○		125	136.47	40	63	5.5	8	B	2.86
	-160-C40-SN12-10	●		160	171.47	40	63	5.5	10	C	4.06
FMA11	-063-A22-SN15-05C	●		63	77.4	22	40	7.0	5	A	0.56
	-080-A27-SN15-06C	●		80	94.4	27	50	7.0	6	A	1.06
	-100-B32-SN15-07	●		100	114.4	32	50	7.0	7	B	1.47
	-100-B32-SN15-07C	○		100	114.4	32	50	7.0	7	B	1.47
	-125-B40-SN15-08	●		125	139.4	40	63	7.0	8	B	2.70
	-125-B40-SN15-08C	○		125	139.4	40	63	7.0	8	B	2.70
	-160-C40-SN15-10	●		160	174.4	40	63	7.0	10	C	3.92
	-200-C60-SN15-12	●		200	214.4	60	63	7.0	12	C	5.46
	-250-C60-SN15-14	○		250	264.4	60	63	7.0	14	C	11.26
	-315-D60-SN15-18	○		315	329.4	60	80	7.0	18	D	20.00
FMA11	-125-B40-SN19-07	○		125	142.63	40	63	9.0	7	B	3.00
	-160-C40-SN19-09	○		160	167.63	40	63	9.0	9	C	4.25
	-200-C60-SN19-11	○		200	217.63	60	63	9.0	11	C	6.18
	-250-C60-SN19-13	○		250	267.63	60	63	9.0	13	C	11.55
	-315-D60-SN19-16	○		315	332.63	60	80	9.0	16	D	20.90

Spare Parts · Ersatzteile

Diameter Durchmesser Ø D	Cassette Kassette	Locator screw Keilschraube	Wrench Schlüssel	
Ø63 - Ø160	 SNEG1205ANR-GR	 DM8×21X	 LOM5×15.1	
Ø63 - Ø315	SNEG1506ANR-GR			
Ø125 - Ø315	SNEG1907ANR-GR			

Applicable tool
Werkzeug **B11-B18**

Tools code key
Werkzeug ISO **B26-B27**

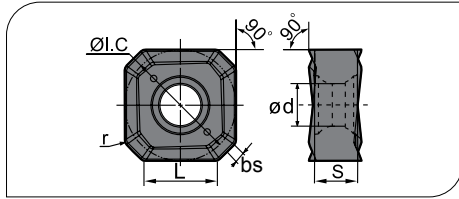
Grade selection guide
Sortenauswahl **B19-B23**

Technical data
Technische Daten **B215-B220**

Milling · Fräsen

Indexable Milling · Fräswendeplatten

Applicable inserts · Wendeschneidplatten



Workpiece Material Werkstoffe	Ideal Machining Condition Gute Bearbeitungsbedingungen		Normal Machining Condition Normale Bearbeitungsbedingungen		Unfavorable Machining Condition Ungünstige Bearbeitungsbedingungen	
	●	●	●	●	●	●
P Steel Stahl	●	●	●	●	●	●
M Stainless Steel Rostfreier Stahl	●	●	●	●	●	●
K Cast iron Gusseisen					●	●
N Non-ferrous material Nichte Metalle						●
S Heat-resistant steel Warmfester Stahl					●	●

Insert shape Plattenform	Type Typ	Dimension (mm) Abmessung						CVD Coating CVD Beschicht.						PVD Coating PVD Beschicht.						Cermet Cermet	Carbide uncoat. unbe. Hartmetall							
		L	I.C	S	bs	Ø d	r	YBC301	YBC302	YBC401	YBM251	YBM253	YBM351	YBD152	YBD252	YBG102	YBG202	YBG205	YBG302		YBG152	YBG252	YNG151	YNG151C	YC30S	YD101	YD201	
	SNEG1205ANR-GM	7.6	12.0	4.76	1.05	4.6	0.8	●				●																
	SNEG1506ANR-GM	9.4	15.0	5.54	1.30	5.5	0.9	●				●																
	SNEG1506ANR-GR	9.4	15.0	5.54	1.30	5.5	0.9					●		●														
	SNEG1907ANR-GR	12.1	19.0	7.0	1.67	7.2	1.0					○																

Recommended cutting data · Empfohlene Schnittdaten

Workpiece material Werkstückstoff	Hardness HB Härte	Grade Sorte	Cutting data Schnittdaten		
			V (m/min)	f (mm/z)	a _{pmax}
P Low-carbon steel Soft steel Niedriglegierter Kohlenstoffstahl Baustahl	≤180	YBM253	270 (220-350)	0.2 (0.1-0.4)	5.5-9.0
		YBC302	270 (220-350)	0.2 (0.1-0.4)	5.5-9.0
	180-280	YBM253	260 (200-320)	0.2 (0.1-0.4)	5.5-9.0
		YBC302	260 (200-320)	0.2 (0.1-0.4)	5.5-9.0
	280-350	YBM253	240 (180-300)	0.2 (0.1-0.4)	5.5-9.0
		YBC302	240 (180-300)	0.2 (0.1-0.4)	5.5-9.0
K Cast iron Gusseisen	180-250	YBD152	270 (150-300)	0.4 (0.1-0.5)	5.5-9.0

● Ex Stock / ab Lager ○ On demand / auf Anfrage