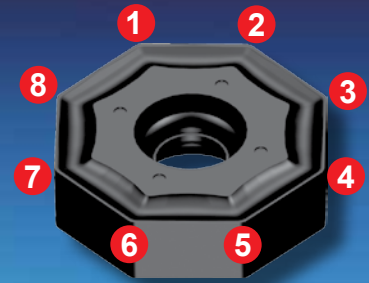
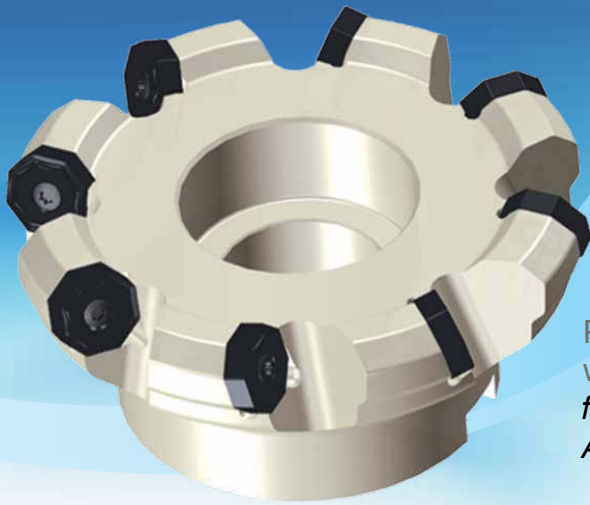


FMA07



Stable double side insert with 16 cutting edge for high productivity / *Stabile doppelseitige Wendeschneidplatte mit 16 Schneidecken für hohe Wirtschaftlichkeit*

Positive light cutting chip breaker for finishing to roughing in wide application field / *Positive, leicht schneidende Spanbrecherform für die Schlicht- bis Schruppbearbeitung mit weitem Anwendungsspektrum*

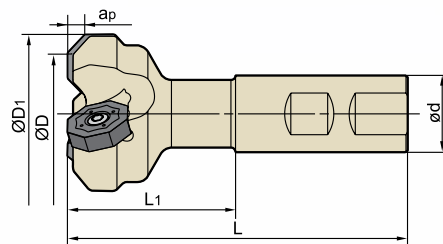
Cutter body diameter $\varnothing 25$ to $\varnothing 315$, inserts ONHU06**-PM and ONHU08**-PM, Grades YBM253, YBD152, YBM351 and YBG202 / *Fräserdurchmesser $\varnothing 25$ bis $\varnothing 315$, WSP ONHU06**-PM und ONHU08**-PM, in den Sorten YBM253, YBD152, YBM351 und YBG202.*

Face milling / Planfräser

Kr:45°






FMA07 P M K



Type Typ	Stock Lager		Dimension Abmessung (mm)							Tooth Zähne Z	Weight Gewicht (kg)
	R	L	ØD	ØD ₁	ød	L	L ₁	a _{pmax}			
FMA07 -025-XP20-ON06-02	○	○	25	37	20	95	45	4	2	0.2	
-040-XP25-ON06-03	○	○	40	52	25	106	50	4	3	0.4	
-032-XP25-ON08-02	●	○	32	47	25	111	55	5	2	0.4	
-032-XP25-ON08-02C	●	○	32	47	25	111	55	5	2	0.4	
-040-XP25-ON08-03	●	○	40	55	25	111	55	5	3	0.5	
-040-XP25-ON08-03C	●	○	40	55	25	111	55	5	3	0.5	
-050-XP25-ON08-04	●	○	50	65	25	111	55	5	4	0.6	

● Ex stock / ab Lager ○ On demand / auf Anfrage

■ Spare Parts · Ersatzteile

Diameter Durchmesser ØD	Insert WSP	Screw Schraube	Wrench Schlüssel	
				
Ø25 -Ø40	ONHU06**-PF/PM/W	I60M4×10	--	WT15IS
Ø32 -Ø50	ONHU08**-PF/PM/W	I60M5×13	WT20IT	--



Milling · Fräsen

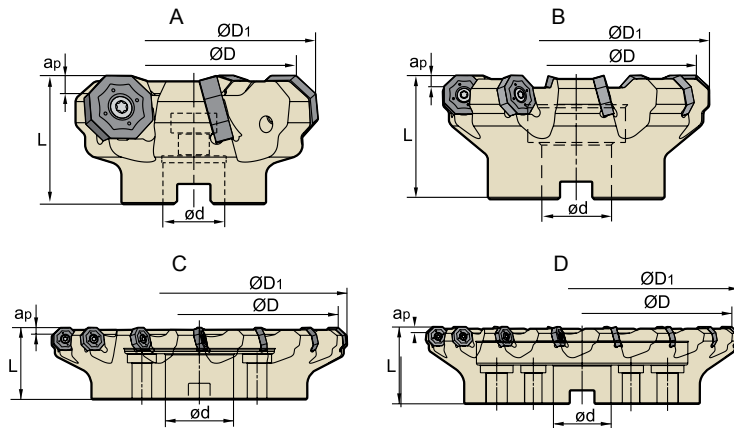
Indexable Milling Tools · Wendeplattenfräser

Face milling / Planfräser

Kr:45°






FMA07 P M K



Type Typ	Stock Lager		Dimension Abmessung (mm)					Tooth Zähne Z	Coupling Aufnahme	Weight Gewicht (kg)
	R	L	ØD	ØD1	ød	L	ap _{max}			
FMA07	-050-A22-ON06-05	● ○	50	62	22	40	4	5	A	0.3
	-050-A22-ON06-05C	● ○	50	62	22	40	4	5	A	0.3
	-063-A22-ON06-06	● ○	63	75	22	40	4	6	A	0.5
	-063-A22-ON06-06C	● ○	63	75	22	40	4	6	A	0.5
	-080-B27-ON06-07	● ○	80	92	27	50	4	7	B	1.0
	-080-B27-ON06-07C	● ○	80	92	27	50	4	7	B	1.0
	-100-B32-ON06-08	● ○	100	112	32	63	4	8	B	1.9
	-100-B32-ON06-08C	● ○	100	112	32	63	4	8	B	1.9
	-125-B40-ON06-09	● ○	125	137	40	63	4	9	B	3.5
	-125-B40-ON06-09C	● ○	125	137	40	63	4	9	B	3.5
	-160-C40-ON06-11	○ ○	160	172	40	63	4	11	C	4.3
	-200-C60-ON06-13	○ ○	200	212	60	63	4	13	C	6.4
	-250-C60-ON06-15	○ ○	250	262	60	63	4	15	C	13.4
	-315-D60-ON06-17	○ ○	315	327	60	80	4	17	D	21.9
	-063-A22-ON08-05	● ○	63	78	22	40	5	5	A	0.5
	-063-A22-ON08-05C	● ○	63	78	22	40	5	5	A	0.5
-080-B27-ON08-06	● ○	80	95	27	50	5	6	B	0.9	
-080-B27-ON08-06C	● ○	80	95	27	50	5	6	B	0.9	
-100-B32-ON08-07	● ○	100	115	32	63	5	7	B	1.8	
-100-B32-ON08-07C	● ○	100	115	32	63	5	8	B	3.1	
-125-B40-ON08-08	● ○	125	140	40	63	5	8	B	3.1	
-125-B40-ON08-08C	○ ○	125	140	40	63	5	8	B	3.1	
-160-C40-ON08-10	● ○	160	175	40	63	5	10	C	4.1	
-200-C60-ON08-12	● ○	200	215	60	63	5	12	C	6.1	
-250-C60-ON08-14	● ○	250	265	60	63	5	14	C	12.0	
-315-D60-ON08-16	● ○	315	330	60	80	5	16	D	21.0	

● Ex stock / ab Lager ○ On demand / auf Anfrage

Spare Parts · Ersatzteile

Diameter Durchmesser ØD	Insert WSP	Screw Schraube	Wrench Schlüssel	
				
Ø50 -Ø315	ONHU06**-PF/PM/W	I60M4×10	--	WT15IS
Ø63 -Ø315	ONHU08**-PF/PM/W	I60M5×13	WT20IT	--

● Ex Stock / ab Lager ○ On demand / auf Anfrage

